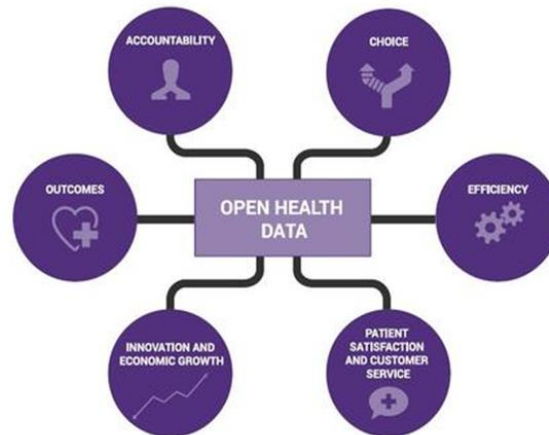
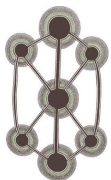


DATA ACCESS WORKSHOP



16 MARCH 2017



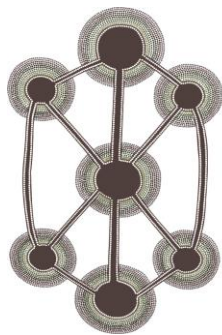
South Australian Academic
Health Science and
Translation Centre



Government of South Australia
Health Performance Council

WELCOME

We would like to Acknowledge that the land we meet on today is the traditional lands for the Kurna people and that we respect their spiritual relationship with their Country. We also acknowledge the Kurna people as the traditional custodians of the Adelaide region and that their cultural and heritage beliefs are still as important to the living Kurna people today.



South Australian Academic Health Science and Translation Centre



Professor Steve Wesselingh
Director



Overview of SA Centre

- ▶ Recognised by the NHMRC as one of four NHMRC Advanced Health Research and Translation Centres in 2015.
- ▶ A whole-of-state collaborative network.
- ▶ Key partnerships with three universities, SAHMRI, SA Health, LHN's and two SA Primary Health Networks.
- ▶ Involvement of non-Government sector:
 - Health Consumers Alliance
 - Aboriginal Health Council of SA
 - Cancer Council SA
- ▶ Provides the focal point for a collaborative approach to research and the translation of evidence into patient care, whilst ensuring active collaboration of researchers with end-users
- ▶ A strong focus on research, clinical services, education and training, fostering multi-disciplinary collaboration to drive the translation of research outcomes into evidence based practice, accelerate translation in disease areas, as well as tackling the grand challenges in health.

SA Centre Members

The Members of the SA Centre encompass the full breadth of health service delivery, covering the whole geography of the state:

- ▶ SA Health
- ▶ SAHMRI
- ▶ University of Adelaide
- ▶ Flinders University
- ▶ University of South Australia
- ▶ Aboriginal Health Council of South Australia
- ▶ Health Consumers Alliance of South Australia
- ▶ Adelaide Primary Health Network
- ▶ Country SA Primary Health Network
- ▶ Cancer Council SA



SA Centre Priorities for 2016 – 17

Research Specific Priority Areas

- ▶ Aboriginal Health
- ▶ Colorectal Cancer
- ▶ Cardiac Rehabilitation
- ▶ Healthy Ageing
- ▶ Mental Health
- ▶ The First 1000 Days of Life:
- ▶ Stroke
- ▶ Diabetes

Cross Cutting Thematic Priorities

- ▶ **Translation of Evidence Practice:** to normalise relative utilisation of health services in SA known to be high e.g. arthroscopy, hysterectomy, c-section, diabetic amputation.
- ▶ **Evidence Based Pathways:** Development and consistent implementation and audit of evidence based pathways for known high morbidity and mortality in SA e.g. stroke, diabetes.
- ▶ **Translational Pipeline:**
 - ▶ Clinical trials:
 - ▶ Commercialisation:
- ▶ **Data Access and Delivery**



SA Centre - Activities

Aboriginal Health:

- ▶ Developed a SA Aboriginal Heart, Stroke & Diabetes Plan.
- ▶ Completed the evaluation of the SA Health funded Close the Gap Program for SA Health.
- ▶ SA Aboriginal Cancer Control plan, developed by SA health in collaboration with the Wardliparingga Aboriginal Research Unit.
- ▶ Establishment of an SA Aboriginal Chronic Disease Consortium.

The First 1000 Days of Life:

- ▶ Developing strategy to reduce the number of pre-term births in South Australia.
- ▶ Maternal immunisation Program implemented
- ▶ New immunisation clinic at the Women's and Children's Hospital
- ▶ Development of new infant feeding guidelines for allergy prevention.

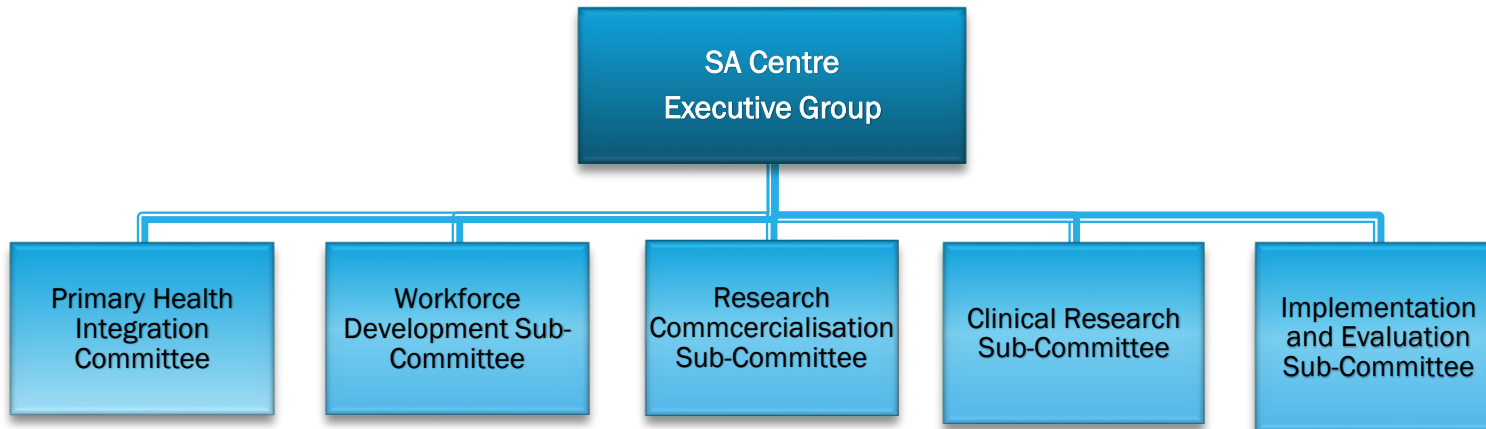
Cardiac Rehabilitation:

- ▶ Established the SA Centre Cardiac Rehabilitation and Secondary Prevention Working Group.
- ▶ Undertaking the "SA Cardiac Rehabilitation data audit for 2014 and 2015, and completing Data Linkage Project".

SA Centre - Activities

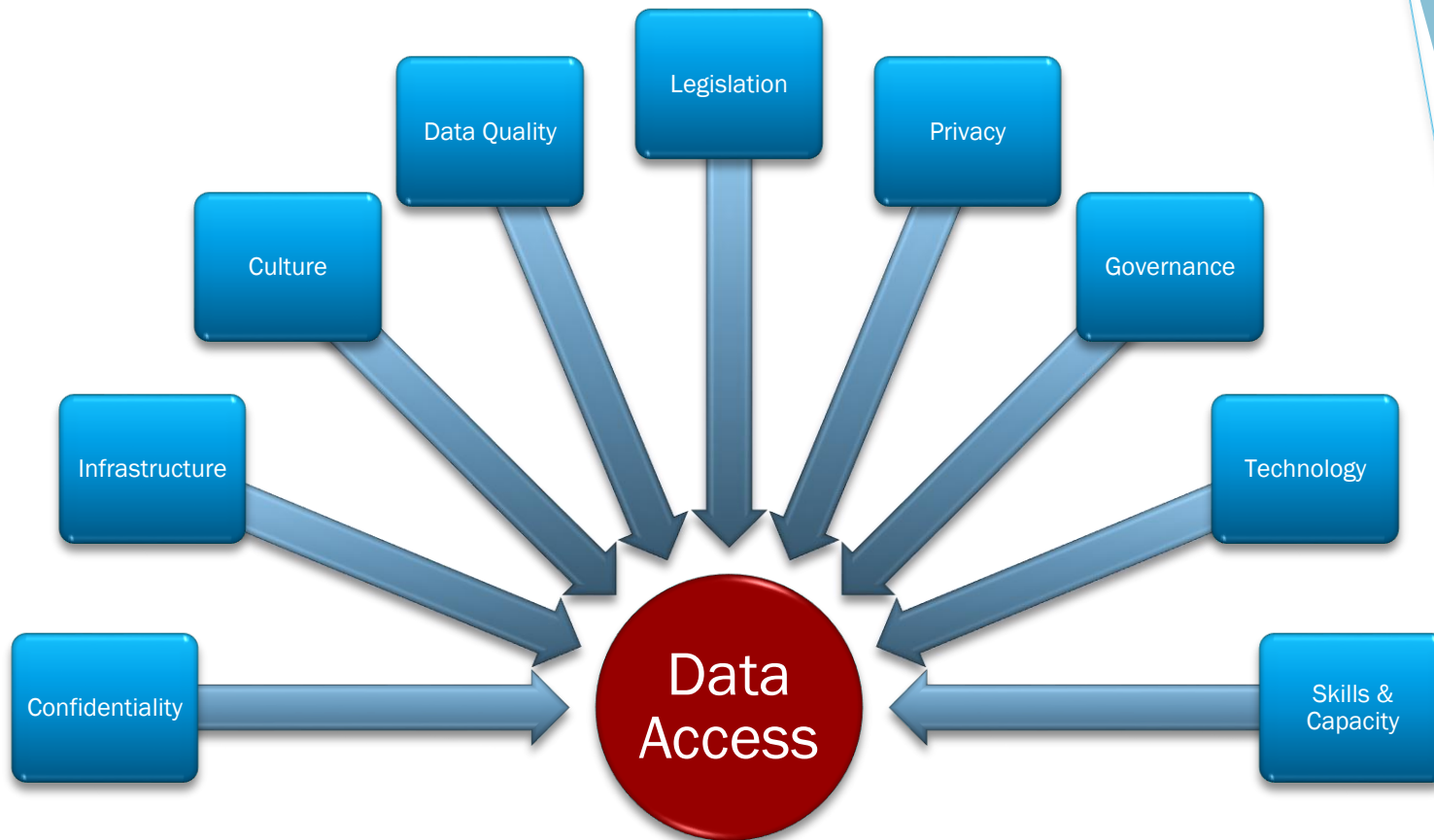
- ▶ **Colorectal Cancer:** “Beat Bowel Cancer Project”: Aim is to reduce preventable deaths from colorectal cancer in the SA population via evidence-driven interventions. Successful recipient of NHMRC \$100,000 Translational Research Projects grant.
- ▶ **Mental Health:** Developing a Mental Health Registry for SA to collect outcome data for mental health care delivered in the State.
- ▶ **SA Immunisation Strategic Alliance** established under the auspices of the SA Centre.
- ▶ **SA MenB Vaccine Herd Immunity Study:** A study that will enrol 50,000 school students to measure the impact of MenB vaccine on herd immunity.
- ▶ **Stroke:** Commenced research on the quantification of barriers to Stroke Unit access and the identification of strategies to overcome these barriers.
- ▶ **SA Centre Clinical Research:** Initial focus on addressing issues associated with clinical research governance processes.
- ▶ **SA Centre Research Commercialisation:** Commenced pilot project at SAHMRI to develop stage 1 of a deep technology incubator platform using the Start-up61 framework by Bright Arena.
- ▶ **SA Centre Workforce Development:** Initial focus on the development of a “Clinical Translation Career Pathway” model.
- ▶ **Second SA Centre Student Open-Night:** held on 18th of July.





SA Centre Priorities

- Evidence Based Pathways: Development and consistent implementation and audit of evidence based pathways for known high morbidity and mortality in SA
- Data Access and Delivery



THE AIM

- ▶ To promote and increase data access for audit and research in health.
- ▶ Inform evidence based practice to achieve consistency in models of care.
- ▶ To make the most of the data we have.
- ▶ To improve health system performance and health outcomes for the community.



National and State Focus on Data Access and Use

- ▶ Review of Australia's Health System Performance Information and Reporting Frameworks: Public Consultation Paper (Jan 2017)
- ▶ Productivity Commission: Data Availability and Use Draft Report (October 2016)
- ▶ Flying Blind: Australian Consumers and Digital Health Australian Health Data Series: Volume1 (October 2016):
- ▶ The Senate Select Committee on Health, Sixth interim report Big health data: Australia's big potential (May 2016)
- ▶ Data Availability and Use Productivity Commission Issues Paper (April 2016)
- ▶ The Academy of the Social Sciences in Australia Roundtable Report: Trusted Access Model (2016)
- ▶ SA Government Open Data Policy
- ▶ SA Public sector (Data Sharing) Bill 2016
- ▶ **SA Health Data Collection and Management Senate Report (April 2014)**

SA Health Data Collection and Management Senate Report (2014)

Key recommendations

- ▶ SA Health engage with key external agencies such as the proposed Health Performance and Productivity Commission to develop a strategy for how comparative healthcare data can be presented, shared, and made more accessible to frontline health care professionals within the state.
- ▶ The ability for health services to measure and analyse data, and subsequently draw conclusions is limited.
- ▶ In collaboration with SA Health Data and Reporting Services, facilitate further discussion amongst SA Health clinicians about what information they require at a service/unit level and how it is best accessed across the system.
- ▶ Local Health Networks review and analyse how they can promote a shift in analytical capacity and resources from 'financial' to 'clinical' departments, encouraging employment of persons such as health economists, bio-statisticians or behaviour scientists across the system.
- ▶ Local Health Networks develop internal mechanisms and accountability frameworks for managing poor performance of health services/units, as measured against state, national and international benchmarks.
- ▶ SA Health commission a project which explores what health service data consumers want access to, and how, within the public domain.

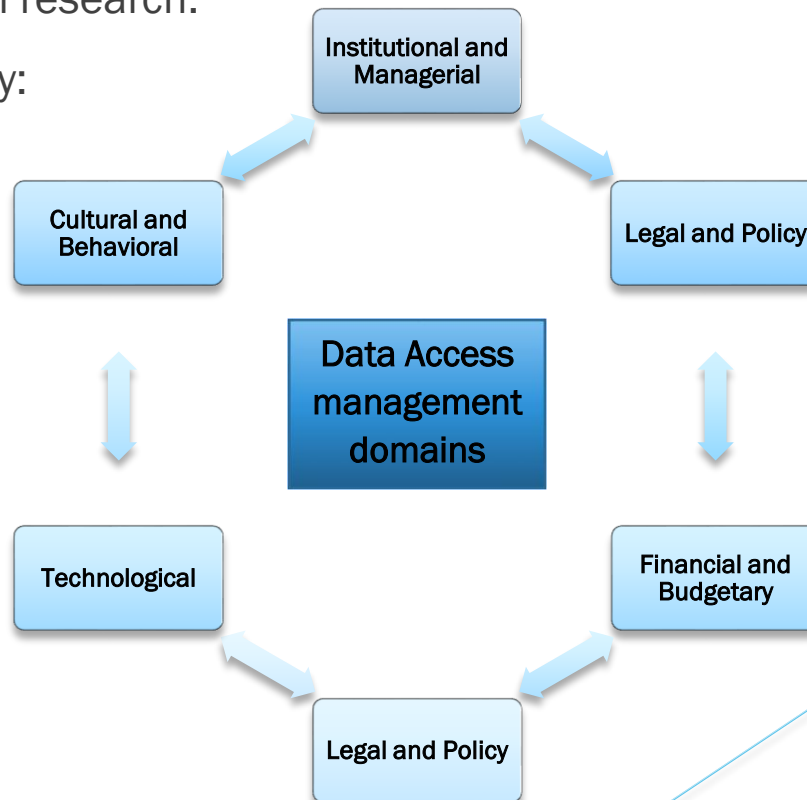
How are we travelling?

The need to address the data access barriers and issues is recognised by agencies, and positive steps are being taken to address them.

But:

There is still some way to go before we have reached a point where we are in a position to freely share data to facilitate clinical service delivery and health research.

The Focus for today:



What do we want to achieve Today?

- ▶ Our speakers today will set the scene - outlining the work done to date and the latest thinking on the directions of data access in the South Australian Public Sector and elsewhere.
- ▶ To apply our collective experience, insight and imagination to actively drive and promote the need for increased health data access for audit and research.
- ▶ To start the process to identify actionable insights to:
 - ▶ Undertake a systematic analysis of the existing data access barriers;
 - ▶ Identification of those areas where tangible improvements can be made to overcome those barriers;
 - ▶ Use this information to commence the development of a framework for an effective state-wide data access strategy to increase data access for research and audit for improved health outcomes and public benefit.